



AMECARE Heat Up

Heat up and cool down service for Glass Melt-Tank operators

In the glass industry, the heating up and cooling down phases of a melt tank are the most critical periods in ensuring long-term furnace reliability and efficiency.

LAND[®], a business of AMETEK, Inc, is proud to introduce the AMECare Heat Up service; a tailored solution designed to support melt-tank operators during these crucial phases.

HEATING UP GLASS MELT TANKS

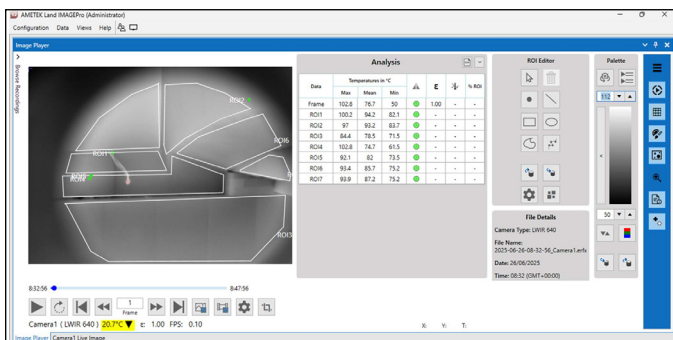
Heating up glass melt tanks requires specialist expertise and data gathering. Good control and uniformity during heating from cold is critical to the long-term efficient operation of the furnace and can save long-term hidden costs. **These can be avoided with improved thermal data gathering and imaging.**

Traditional startup methods often rely on limited visual cues and temperature checks from a limited number of temperature data points, which can lead to decisions being made on ramp rates and burner tuning without sufficient data.

LAND THERMAL IMAGING

LAND's thermal imaging systems, particularly the long-wavelength (LWIR) and mid-wavelength infrared (MWIR-b) cameras, offers end-users the opportunity to monitor temperature and heating uniformity during start-up **from cold to operating temperature (1800 °C)**. It provides real-time visibility into the heat distribution across the melt tank, enabling operators to:

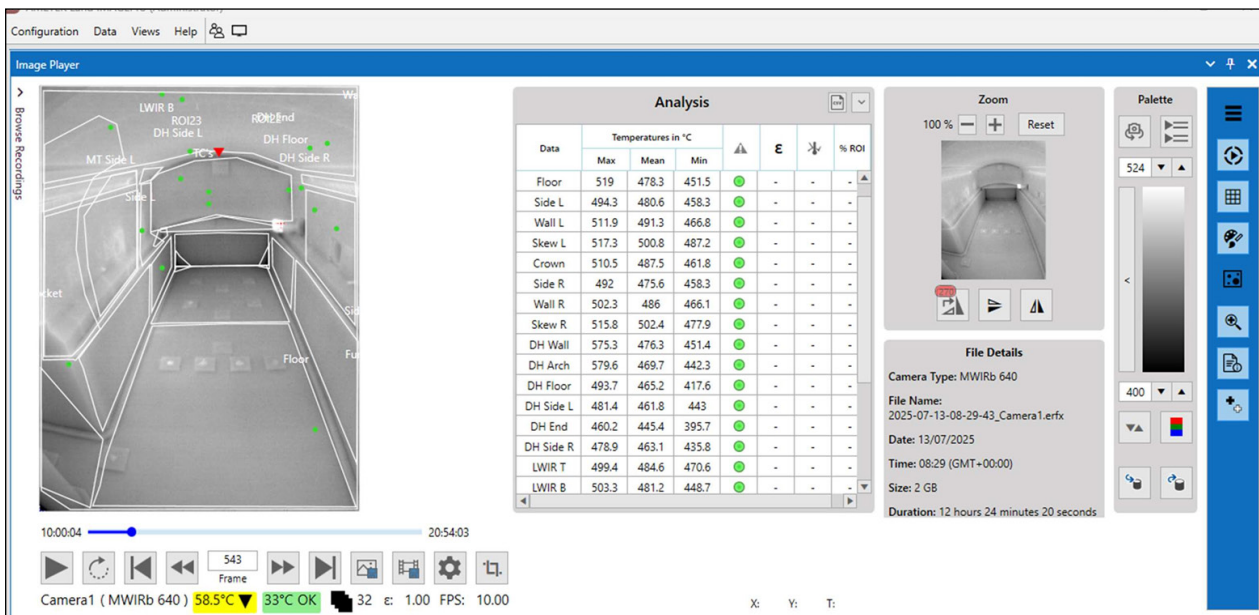
- Detect cold spots and uneven heating
- Adjust burner settings for uniform temperature rise
- Prevent thermal shock and refractory stress
- Reduce startup time and improve reliability



LWIR-640 at 100 °C

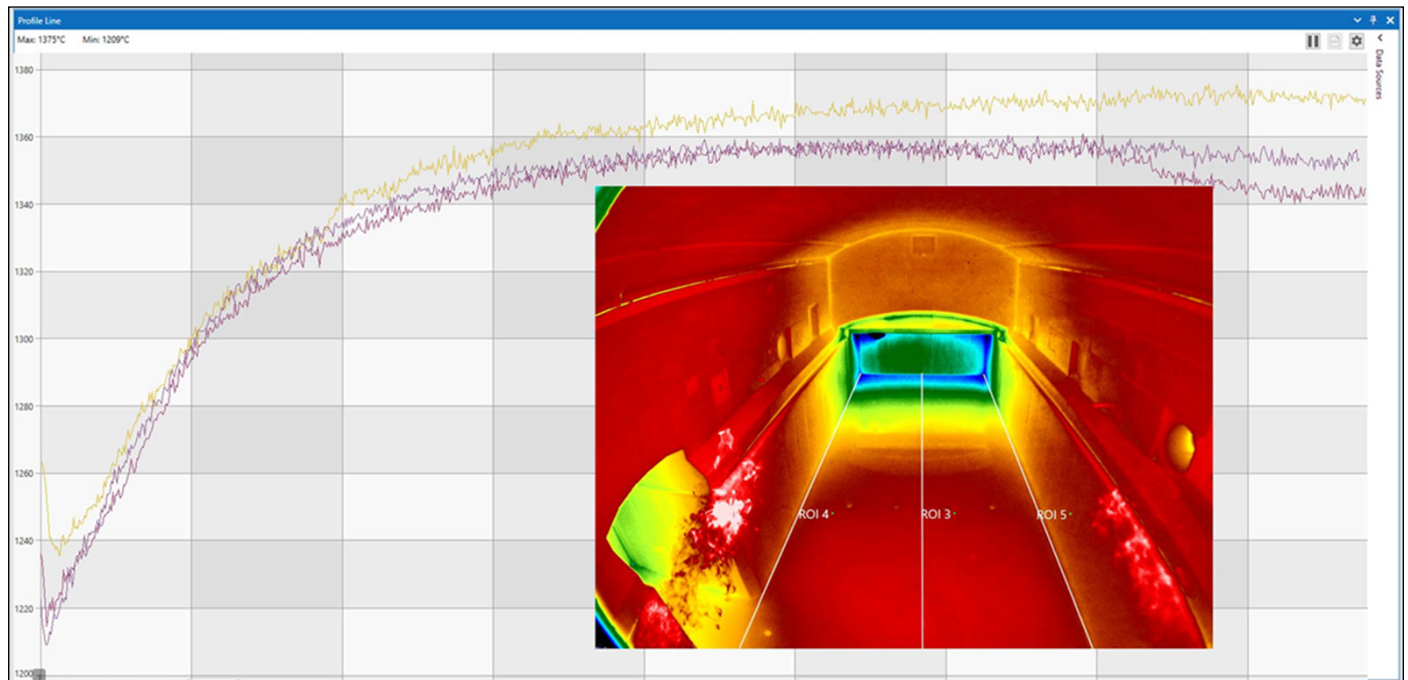


Critical areas like the dog house arch and furnace crown can be monitored that consist of high grade refractory.



MWIR-b-640 at 500 °C

NIR-B-2K AT 1350 °C AND OVER



Furnace Profiles at 1350 °C using NIR-b-2K showing generally good balance.

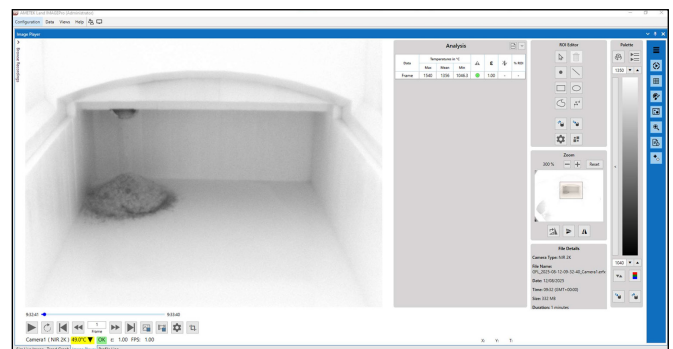
WHAT IS THE AMECARE HEAT UP SERVICE?

The AMECare Heat Up service offers an LWIR-640 and a 3ft MWIR borescope for short-term rental (2–3 weeks) during startup. This instrument replaces the standard NIR-b in existing PAR/LPAR retraction systems, or can be used with a cooling jacket as part of a temporary installation; eliminating the need for full system procurement.

A trained LAND engineer is present for the commissioning and configuration of the thermal imaging equipment and to provide training on how to get the maximum benefit from the camera systems and ImagePro software.

SERVICE DETAILS

The LWIR (0–500 °C) and MWIR borescope (300–1200 °C and 500–1800 °C dual range) are available from our UKAS-calibrated fleet of rental instruments, ensuring precision and compliance with international standards.



Furnace Batch Loading with NIR-b-2K

**READY TO
HEAT UP?**

Contact LAND to discuss a tailored AMECare Heat Up service quotation.



CONTACT US

WEB: www.ametek-land.com

EMAIL: land.enquiry@ametech.com

We are fully committed to Quality Assurance. See all our accreditations at AMETEK-LAND.COM/QUALITY