

LAPTOP/PC CONFIGURATION FOR CONNECTION TO SOLONET SYSTEM

When configuration of SOLOnet thermometers is required, it is first necessary to ensure that the laptop/PC intended for carrying out these configuration tasks, is itself, fully configured. There are several defined ways of configuring SOLOnet thermometers, each method requiring specific laptop/PC configuration tasks. The thermometer configuration method and associated laptop/PC configuration tasks are listed below:

(A) MULTIPLE SOLONET SYSTEM SETUP IN WEB BROWSER CONFIGURATION - VIA STAND ALONE NETWORK

This method requires the following laptop/PC configuration:

- i) 'JAVA RUNTIME ENVIRONMENT' installed ①
- ii) 'PROXY SERVER' option enabled ②
- iii) 'MANUAL CONFIGURATION OF SN-W/E NETWORK SETTINGS (MULTIPLE APP'S)' to be carried out ③

(B) SOLONET SYSTEM SETUP IN WEB BROWSER CONFIGURATION - VIA DIRECT CONNECTION

This method requires the following laptop/PC configuration:

- i) 'JAVA RUNTIME ENVIRONMENT' installed ①
- ii) 'PROXY SERVER' option disabled ②
- iii) 'PEER TO PEER' setup to be established (See Section B of the Quick Start Guide)

(C) SOLONET SYSTEM SETUP USING WINDOWS CONFIGURATOR SOFTWARE (SN-WCS) - DIRECT RS485

This method requires the following laptop/PC configuration:

- i) 'WINDOWS CONFIGURATOR' software installed ④

(D) SOLONET SYSTEM SETUP USING WINDOWS CONFIGURATOR SOFTWARE (SN-WCS) - VIA SN-W/E

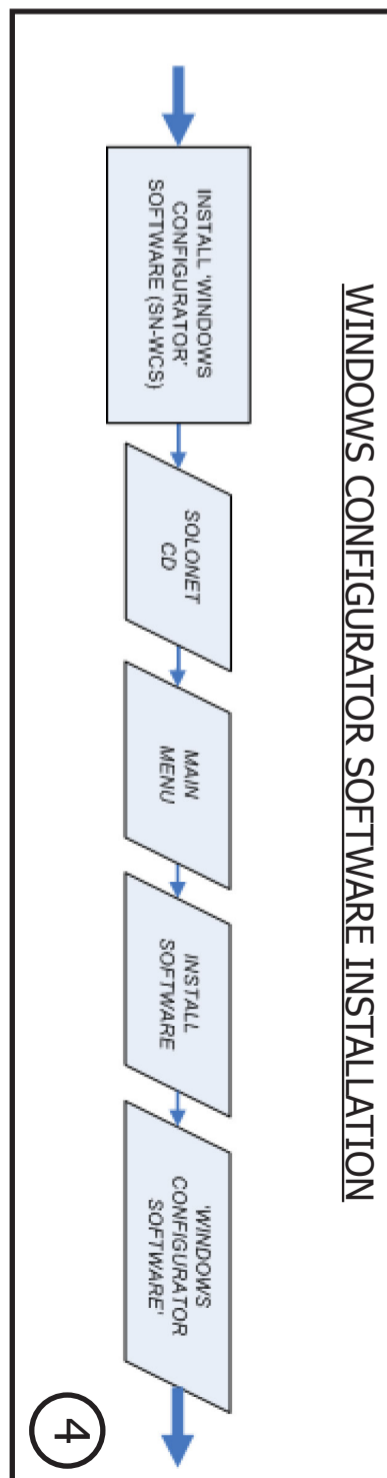
This method requires the following laptop/PC configuration:

- i) 'WINDOWS CONFIGURATOR' software installed ④

(E) SOLONET SYSTEM SETUP USING WINDOWS HYPERTERMINAL - DIRECT 4-WIRE RS485

This method requires the following laptop/PC configuration:

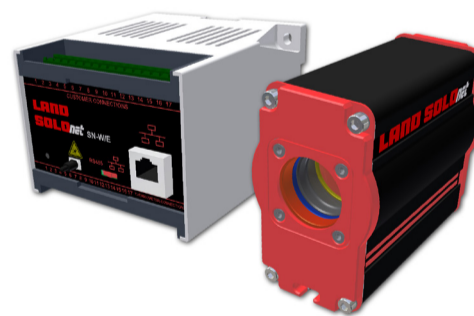
- i) 'WINDOWS HYPERTERMINAL' utility opened



SOLONet

Digital Infrared Thermometer

PC/Laptop & SN-W/E Configuration for SOLOnet Troubleshooting Guide



www.landinst.com

Publication N° 807585
Issue 4: 12 October 2015
Copyright © Land Instruments International 2006 - 2015

LAND

AMETEK®

PROCESS & ANALYTICAL INSTRUMENTS

Land Instruments International Ltd • Dronfield S18 1DJ • England
Email: land.enquiry@ametek.co.uk • www.landinst.com • Tel: +44 (0) 1246 417691
• Fax: +44 (0) 1246 410585

AMETEK Land, Inc. • 150 Freeport Rd • Pittsburgh, PA 15238 • U.S.A.
Email: irsales@ametek.com • www.ametek-land.com • Tel: +1 (412) 826 4444
• Fax: +1 (412) 826 4460

For a full list of international offices, please visit www.landinst.com



Applies in the UK



Applies in the USA

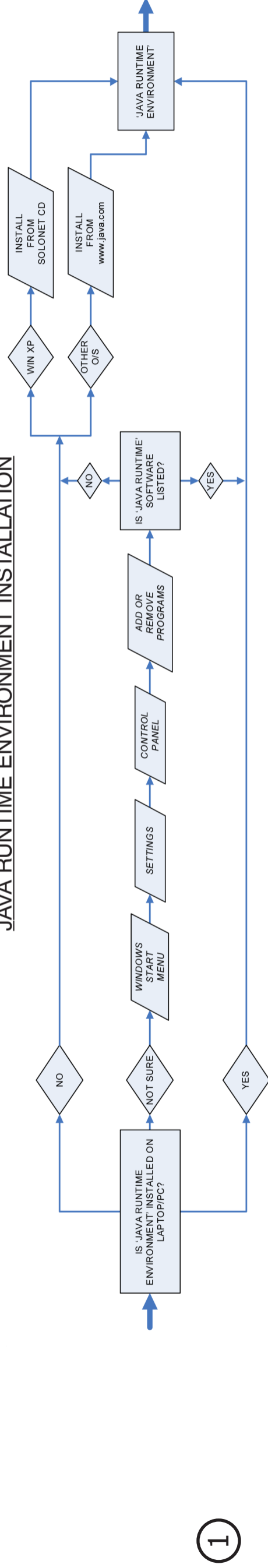
Non-Contact Temperature
Measurement Solutions

Troubleshooting

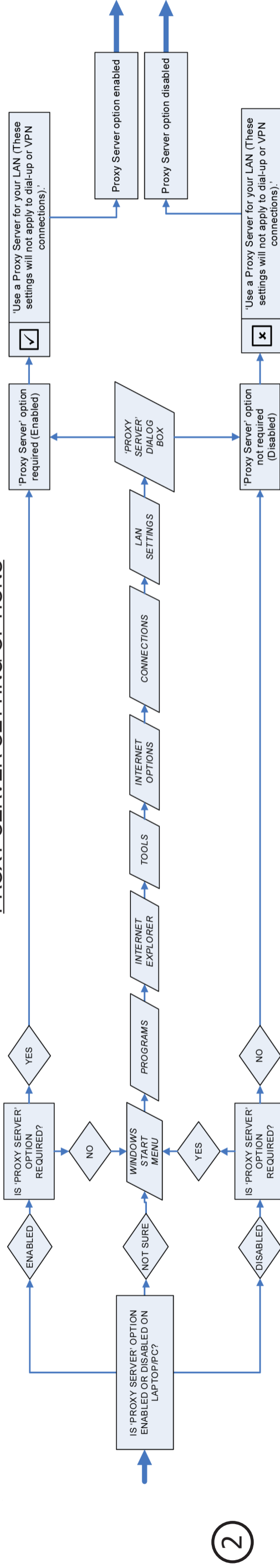
Red power LED does not light	Check the power supply to the SN-W/E and that the voltage supply is connected with the correct polarity
Ethernet link LED does not light	Check the Ethernet cable for damage and that it is securely connected at both the SN-W/E and the PC
Ethernet traffic LED does not blink	Check the Ethernet cable for damage and that it is securely connected at both the SN-W/E and the PC
Configuration web page does not display	Check that the RS485/Ethernet switch on the front of the SN-W/E is set to Ethernet Check that Java is installed by following the "Java Runtime Environment Installation" flow chart

SN-W/E does not connect	Check that there are no errors in the bottom left hand corner of the web page. If there are then contact Land Instruments for assistance.
Thermometer settings user name or password does not work	Check that the PC network settings are correct and check that the SOLonet is correctly configured by following the "SN-W/E Network Configuration Settings" flow chart.
Thermometer settings user name or password does not work	The user name and password are case sensitive, check that these have been entered correctly.
Thermometer settings user name or password does not work	Check that the SOLonet has fully connected to the SN-W/E. Check the wiring.

JAVA RUNTIME ENVIRONMENT INSTALLATION



PROXY SERVER SETTING OPTIONS



SN-W/E NETWORK CONFIGURATION SETTINGS

